



WEEKLY NEWSLETTER



HEADTEACHER'S NOTE

Dear parents and carers,

The season of Advent begins this Sunday. Advent is the time to start making preparations to celebrate Christ's birth - God's momentous arrival into our world in the person of Jesus. Advent is also the season of hope: a time to think deeply about Jesus' return at the end of time, which we read about in this Sunday's Gospel. So let's use this season of Advent to be open to welcome the Lord, to make a fresh start and to draw closer to God.

During the month of November, we have thought about all those we love who have died. We prayed for all the names sent to us throughout this month. May they all rest in peace.

Amen

Mr Monaghan

USEFUL LINKS



Click on the image above for uniform, Coolmilk, school lunch menu, free school meals, after school clubs and more!



Click on the image for term dates, newsletters and the school calendar



Click on the images above to follow Bishop Ellis on Social Media

BISHOP ELLIS CATHOLIC VOLUNTARY ACADEMY

28th November 2025

Diary Dates 2025/2026

December 2025

Monday 1st - Christmas Raffle Opens

Tuesday 2nd - 9.30 Christingle Service

Thursday 4th - FOBE annual light switch on

Friday 5th - Menphys concert at De Montfort Hall

Tuesday 9th - 2.15 KS1 Nativity

Wednesday 10th - 9.30

Reception Nativity

Wednesday 10th - 2.15 KS1 Nativity

Thursday 11th - Santa Panto

Friday 12th - Christmas Raffle Draw

Wednesday 17th - Christmas Dinner and Christmas Outfit Day

Wednesday 17th - FOBE Disco

Thursday 18th - 10.00 KS2 Carol Service St. Theresa's Church

Friday 19th - End of Advent Term
School closes for Christmas

January 2026

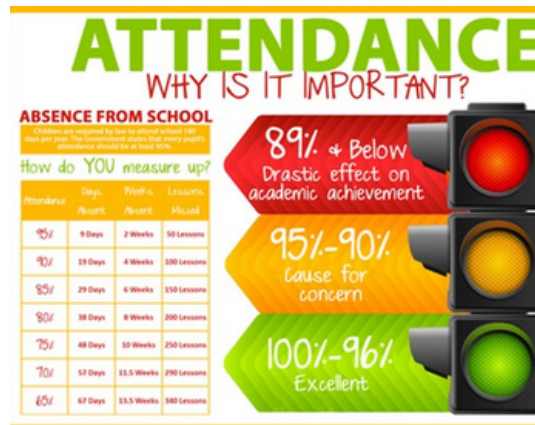
Monday 5th - 8.45 Return to school - Lent Term Begins

Tuesday 6th - Whole School Mass
- Celebration of the word - Epiphany

Wednesday 28th - St Thomas Aquinas CMAT Feast Day Celebrations



Punctuality



Attendance at Bishop Ellis this year is excellent. Our current attendance figures put us in the top 20% of schools across the country. My sincere thanks go to you all for your support in this important aspect of school life. I understand as a parent that this is not always easy.

Please also ensure that your child is in the school building for 8:45 when school starts. Class teachers start lessons immediately and any lateness means that our children are missing out on valuable learning time. I know from my own experience, this can be a challenge. If you feel you would like any support with punctuality please reach out to your child's teacher or speak to a member of staff on the gate in the morning.



Leicester Library Mural

Please have a look at this initiative linked to a family in our school community. Friends of theirs lost their child unexpectedly, they are doing a mural at Leicester library in memory of her and they are asking children to submit their favourite books to be added as part of the mural. It might be a nice activity for children to get involved with. Please follow the link below for more details.

Children can nominate favourite books for new mural



Follow Bishop Ellis on Instagram & Facebook

If you are on Instagram or Facebook please follow and share the school's posts so we can connect with the wider community and prospective parents.



FOLLOW US



LIKE



Christmas Raffle

We're raffle ready! Thank you all for your amazing donations, we've got some fantastic prizes to win this year, so make sure you get your tickets to be in with a chance to win!!

Our raffle will be on sale from Monday 1st December and drawn on Friday 12th, so get your numbers in quick!

Please see the photo below showing our 100 Square Chart that will be in each class! Each square costs just £1.00. Once all squares are sold, they'll be cut up and a winning number will be drawn at random. 🎉🌟

1	2	3	4	5	6	7	8	9	10
11	12	13	14	15	16	17	18	19	20
21	22	23	24	25	26	27	28	29	30
31	32	33	34	35	36	37	38	39	40
41	42	43	44	45	46	47	48	49	50
51	52	53	54	55	56	57	58	59	60
61	62	63	64	65	66	67	68	69	70
71	72	73	74	75	76	77	78	79	80
81	82	83	84	85	86	87	88	89	90
91	92	93	94	95	96	97	98	99	100



This year, we also have an LCFC football and Tigers rugby shirt, both signed by the current teams which we will auction by a silent bid.

Please put your bid with your child's name and teacher on a piece of paper, and put in a sealed envelope to hand in to the office.

Bids will need to be in by the end of the day on Thursday 11th December and will be opened on Friday 12th. Highest bid wins! GOOD LUCK!! 🎅



Mass Times

Divine Infant of Prague, Syston:

Weekend -

Sat 16.30 pm

Sun 11.15 am

St. Theresa's, Birstall;

Weekend -

Sat - 18.00 pm

Sun - 09.15am

Weekdays -

Fri - 18.00 pm

Our Parishes are very keen for children to read and participate in mass. Please get in contact with the parish for further information.

St. Theresa's, Birstall

<https://st-theresa-sacredheart.co.uk/>

Divine Infant of Prague, Syston

<https://stpatrickssandyston.uk/>





Christmas Dinner Menu

With just weeks to go until our School Christmas Dinner Day, here's is the delicious menu that will be served on Wednesday 17th December!

Merry Christmas
Wednesday 17th December

Fresh Roast Turkey
Sausage & Bacon Roll, Sage and Onion Stuffing
Gravy
or
Roast Quorn Fillet

All served with Roast Potatoes, Creamed Potatoes, Peas, Carrots & Sprouts

Christmas Pudding with Custard
Or
Christmas Cookie

Leicestershire Traded Services
www.leicestershire.gov.uk/school-food

Christmas Disco Tickets Available now!!!

Available to purchase in the school shop in Arbor for £3.50.

Reception/K21 - 3.30pm - 4.30pm

KS2 - 4.45pm-5.45pm





Active Travel Month



Our school has proudly received a certificate for our huge participation in Active Travel Month this October! 🚶♀️🚴♂️

This recognition celebrates the incredible effort of our students, staff, and families who embraced walking, cycling, and other forms of active travel.

Together, we've shown how small daily choices can make a big difference for our health, our environment, and our community.

Thank you to everyone who took part! 🌍💚

A huge well done to Mrs Abela for recording her steps and winning a prize! 😊

“Looking for a new challenge? New players and families always welcome at Syston Rugby Club 🏉💪.”





School Choir

Our school choir will be taking part in the Catholic Schools Carol Concert, in aid of Menphys on Friday 5th December 2025.

Please see the poster below for ticket information.

Catholic Schools
CAROL CONCERT
A FESTIVE CONCERT IN AID OF
Menphys
Friday 5th December 2025
at 7:15 pm
De Montfort Hall, Leicester
Book your tickets now at
www.demontforthall.co.uk
or call 0116 233 3111

SCAN ME

Every ticket helps support children and young people with disabilities across Leicestershire

SITE SAFETY

PLEASE CAN YOU ENSURE THAT YOUR CHILD DOES NOT RIDE THEIR BIKES OR SCOOTERS WHILST ON THE SCHOOL SITE. THIS IS TO ENSURE WE KEEP ALL VISITORS SAFE WHILST ON THE SCHOOL SITE.



REMINDER NO PARKING IN THE LAY-BY IN FRONT OF THE SCHOOL GATES.

Our attendance so far this year is 96.5%. This is an excellent start to the year.

PLEASE SEE THE WEBSITE FOR THE CMAT ATTENDANCE POLICY. POLICIES - BISHOP ELLIS CATHOLIC VOLUNTARY ACADEMY

WITH THE INTRODUCTION OF THE NEW NATIONAL FRAMEWORK FOR PENALTY NOTICES, THE FOLLOWING COMES INTO FORCE FOR PENALTY NOTICE FINES ISSUED FOR UNAUTHORISED ABSENCE OCCURRING AFTER 19 AUGUST 2024 5 CONSECUTIVE DAYS OF TERM TIME LEAVE (HOLIDAY) – PENALTY NOTICE FINES WILL BE ISSUED FOR TERM TIME LEAVE OF 5 OR MORE CONSECUTIVE DAYS AND FOR FEWER DAYS WHERE THIS HAS HAPPENED BEFORE. (PLEASE NOTE, WE WILL ARE NO LONGER ABLE TO AGREE TO AND AUTHORISE FAMILY HOLIDAYS) 10 SESSIONS OF UNAUTHORISED ABSENCE IN A 10-WEEK PERIOD – OTHER THAN IN EXCEPTIONAL CIRCUMSTANCES, PENALTY NOTICE FINES WILL BE ISSUED WHEN THERE HAVE BEEN 10 SESSIONS OF UNAUTHORISED ABSENCE IN A 10 WEEK PERIOD. PER PARENT, PER CHILD - PENALTY NOTICE FINES WILL BE ISSUED TO EACH PARENT FOR EACH CHILD WHO WAS ABSENT. FOR EXAMPLE: 3 SIBLINGS ABSENT FOR TERM TIME LEAVE WILL RESULT IN EACH PARENT RECEIVING 3 SEPARATE FINES. FIRST OFFENCE – THE FIRST TIME A PENALTY NOTICE IS ISSUED FOR TERM TIME LEAVE OR IRREGULAR, UNAUTHORISED ABSENCE THE AMOUNT WILL BE £160 PER PARENT, PER CHILD WHEN PAID WITHIN 28 DAYS. THIS IS REDUCED TO £80 PER PARENT PER CHILD IF PAID WITHIN 21 DAYS SECOND OFFENCE (WITHIN 3 YEARS) – THE SECOND TIME A PENALTY NOTICE IS ISSUED FOR TERM TIME LEAVE OR IRREGULAR, UNAUTHORISED ABSENCE THE AMOUNT WILL BE £160 PER PARENT, PER CHILD WHEN PAID WITHIN 28 DAYS. (THERE IS NO OPTION TO REDUCE TO £80 WITH AN EARLY PAYMENT)

THIRD OFFENCE AND ANY FURTHER OFFENCES (WITHIN 3 YEARS) – THE THIRD TIME AN OFFENCE IS COMMITTED FOR TERM TIME LEAVE OR IRREGULAR, UNAUTHORISED ABSENCE A PENALTY NOTICE WILL NOT BE ISSUED. THE CASE WILL PROCEED TO THE MAGISTRATES’ COURT. MAGISTRATE’S FINES CAN BE UP TO £2,500 PER PARENT, PER CHILD. CASES FOUND GUILTY IN MAGISTRATES’ COURT CAN SHOW ON THE PARENT’S FUTURE DBS CERTIFICATE AND MAY IMPACT ON JOB APPLICATIONS AND TRAVEL ABROAD. COURT PROSECUTIONS – PENALTY NOTICES WILL NOT AUTOMATICALLY BE ISSUED. PARENTS ARE ADVISED THAT WHERE THE LA CONSIDERS THAT A PENALTY NOTICE IS NOT APPROPRIATE DUE TO THE LEVEL OF CONCERN ABOUT A CHILD’S ABSENCE, PROSECUTION ACTION MAY BE TAKEN. FURTHER GUIDANCE IS AVAILABLE ON THE GOV.UK WEBSITE. IF YOU HAVE ANY QUESTIONS REGARDING THE CHANGES AND THE NEW NATIONAL FRAMEWORK REGARDING PENALTY NOTICES, PLEASE CONTACT MYSELF. FINES FOR PARENTS FOR TAKING CHILDREN OUT OF SCHOOL: WHAT YOU NEED TO KNOW – THE EDUCATION HUB (BLOG.GOV.UK)

LINKED TO THE IMPORTANCE OF EXCELLENT ATTENDANCE IS PUNCTUALITY. SCHOOL STARTS AT 8:45AM. IT IS THEREFORE ESSENTIAL THAT CHILDREN ARE HERE BEFORE THEN. WE KNOW THAT THIS IS SOMETIMES EASIER SAID THAN DONE AND IF YOU WOULD LIKE TO DISCUSS THIS WITH A MEMBER OF THE SCHOOL SENIOR LEADERSHIP TEAM, PLEASE SPEAK TO ONE OF US ON THE GATE

ATTENDANCE

WHY IS IT IMPORTANT?

SENCE FROM SCHOOL

Children are expected to have an average school 100% attendance. The Department expects that every parent's attendance should be at least 96%.

How do YOU measure up?

Absence	Days	Weeks	Lessons
5d	5 Days	2 Weeks	50 Lessons
10d	10 Days	4 Weeks	100 Lessons
15d	15 Days	6 Weeks	150 Lessons
20d	20 Days	8 Weeks	200 Lessons
25d	25 Days	10 Weeks	250 Lessons
30d	30 Days	12 Weeks	300 Lessons
35d	35 Days	14 Weeks	350 Lessons

89% + Below
Drastic effect on academic achievement

95%-90%
Cause for concern

100%-96%
Excellent

ATTENDANCE

WHY IS IT IMPORTANT?

SENCE FROM SCHOOL

Children are expected to have an average school 100% attendance. The Department expects that every parent's attendance should be at least 96%.

How do YOU measure up?

Absence	Days	Weeks	Lessons
5d	5 Days	2 Weeks	50 Lessons
10d	10 Days	4 Weeks	100 Lessons
15d	15 Days	6 Weeks	150 Lessons
20d	20 Days	8 Weeks	200 Lessons
25d	25 Days	10 Weeks	250 Lessons
30d	30 Days	12 Weeks	300 Lessons
35d	35 Days	14 Weeks	350 Lessons

89% + Below
Drastic effect on academic achievement

95%-90%
Cause for concern

100%-96%
Excellent

ATTENDANCE

WHY IS IT IMPORTANT?

SENCE FROM SCHOOL

Children are expected to have an average school 100% attendance. The Department expects that every parent's attendance should be at least 96%.

How do YOU measure up?

Absence	Days	Weeks	Lessons
5d	5 Days	2 Weeks	50 Lessons
10d	10 Days	4 Weeks	100 Lessons
15d	15 Days	6 Weeks	150 Lessons
20d	20 Days	8 Weeks	200 Lessons
25d	25 Days	10 Weeks	250 Lessons
30d	30 Days	12 Weeks	300 Lessons
35d	35 Days	14 Weeks	350 Lessons

89% + Below
Drastic effect on academic achievement

95%-90%
Cause for concern

100%-96%
Excellent